

THINK PURE

We manufacture customized dust extraction, filtering and storage systems, biomass thermal plants, and industrial painting systems.

We provide solutions that optimize your workplace and respect the environment.



THINK PURE

Coima was established in central Italy, a region famous for the production of machinery for industrial processing and furniture manufacturing. Since 1982 we have been producing suction plants, filtering units, systems for the storage of residues and waste, mainly for wood processing factories

Over time, the skills we have gained have been extended to other fields such as metal, plastic processings and agroindustrial operations, as well as any industrial field with pneumatic conveyance of both solid and gaseous wasting material.

Furthermore, new specializations have for years been part of the offer of CoimaGroup™, which today includes design and installation of painting systems for any type of manufactured goods and biomass thermal plants.

Some solutions

- Bag filters
- Indoor filters
- Filtering and storing minisilo
- Atex dust extractor
- Filtering unit
- Shredder

Toll free 800.417.9206
www.coimausa.com



Bag filters

SHK

The bag filtering units are suitable to solve the problem of sawdust filtering and collection with a low budget. It is ideal for indoor use in smaller woodshops, or for localized extraction from some specific woodworking machines, or even for outdoor installation if buying the external enclosure (optional).

The modular structure of these filters is made of galvanized sheet steel and it is composed by 2 main sections: the filtering battery in the upper part, including the sleeves in polyester fabric, with an optional shaker cleaning system which maintains the filters efficiency automatically (the filters are automatically cleaned each time the fan is switched off), increasing production time by reducing labor required for that operation; below the filter housing, the chips are collected into plastic bags.

The collection bags can be replaced (optionally) by a collection hopper with motorized screw extractor and rotary air lock, for a continuous discharge of the waste into some other collection device or system. The integrated fan is equipped with a radial blades turbine (to allow the passage of every kind of material) and with a 4 poles 1500 rpm (except SHK1) noiseless motor, rated IP55 as protection and IE3 as efficiency.

PLEASE NOTE: The bags filters are not sold in ATEX version; for ATEX compliant units please refer to "F250-320-380-450" compact filters series.



INDOOR VERSION

- SACK
- DRUM



OPTIONAL
OUTDOOR VERSION WITH
ENCLOSURE PANELS

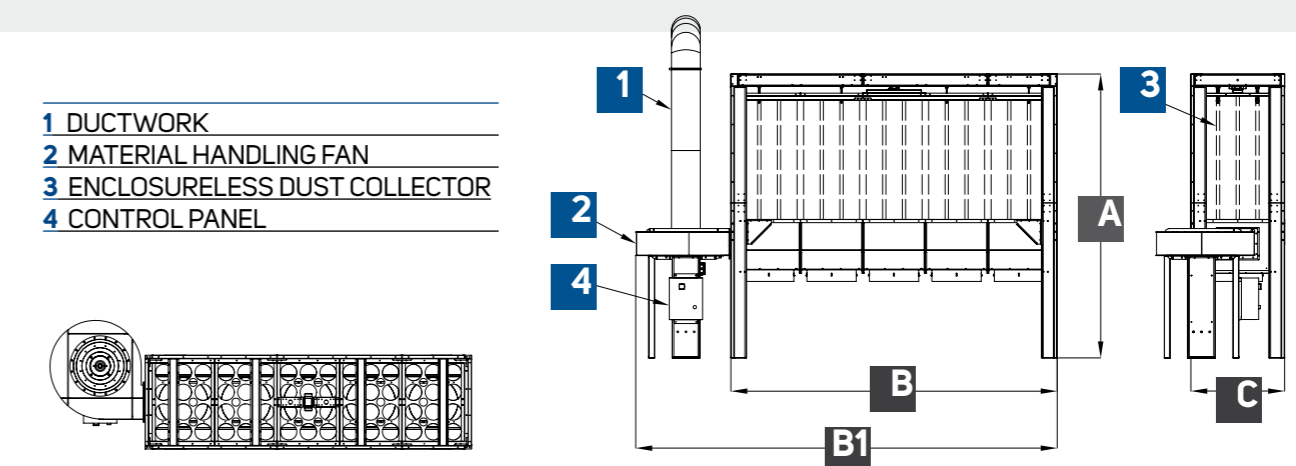


OPTIONAL

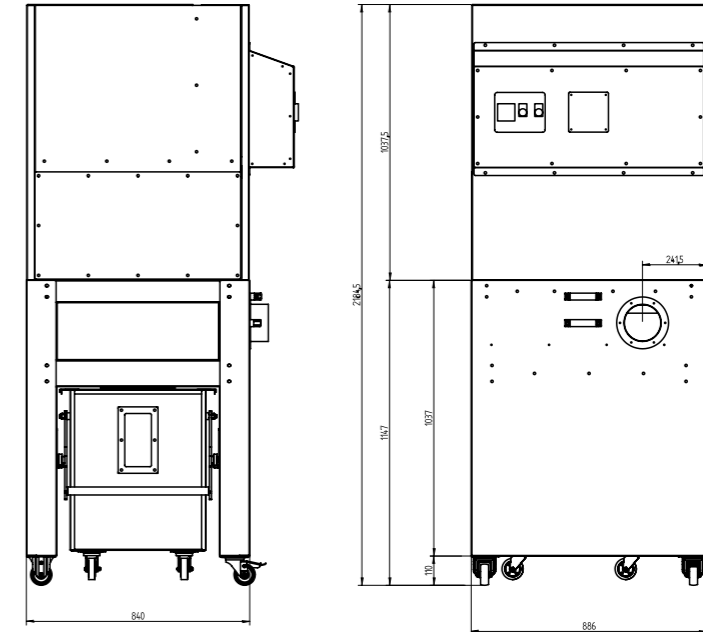


OPTIONAL

Model	Pressure	Max Air Flow [CFM]	Nr.Bags	Fan Power [hp]	Filtering Surface [ft ²]	Nr. Filtering sleeves	Filtering sleeves diameter	Filtering sleeves length	A	B	B1	C	C1
SHK 1	8"	3200	1	5	119	12	8"	59"	126.75"	36.25"	73.5"	44.75"	53.25"
SHK 2	8"	3600	2	7.5	238	24	8"	59"	126.75"	60.5"	102"	44.75"	57"
SHK 3	7"	5000	3	10	357	36	8"	59"	126.75"	88.5"	130"	44.75"	57"
SHK 3 PLUS	13.5"	5000	3	15	357	36	8"	59"	126.75"	88.5"	130"	44.75"	57"
SHK 4 HS	13.5"	5000	4	15	476	48	8"	59"	128.25"	126.75"	164.5"	44.75"	61.5"
SHK 4	11"	6400	4	15	476	48	8"	59"	128.25"	126.75"	164.5"	44.75"	61.5"
SHK 5	11"	7100	5	20	595	60	8"	59"	128.25"	157.75"	192.5"	44.75"	61.5"



Indoor filter unit F140



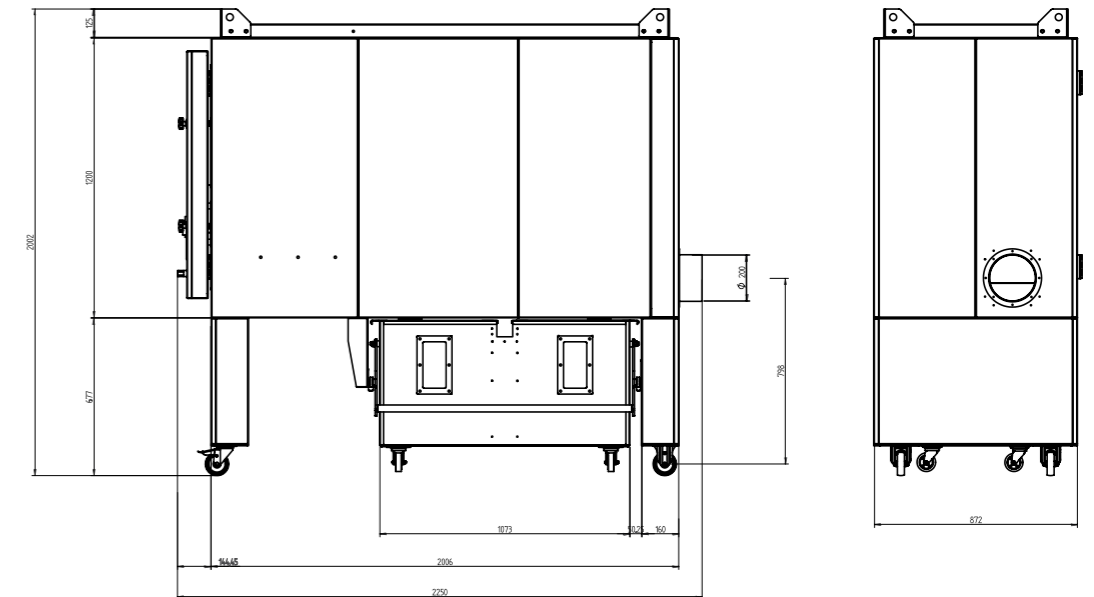
MODEL	F140
Air-Flow Rate [CFM]	1175
Pressure [in/wc]	8.2"
Quantity of Bins	1 x 34 gal.
Fan Power [hp]	3 HP
Filtering Surface Area [Ft ²]	107
Quantity of Filtering Elements	1
Filtering Elements Diameter	Ø14.5" x H23.6"
Dimensions [in]	86" x 33" x 35"
Noise Level [Db(A)]	75
Inlet Diameter [in]	5.5"
Outlet Sizes [in]	7.1" x 32.3"

Reliable, silent and easy to use. With its compact design, optimized for maximum efficiency with a small form factor, F SERIES is suitable for the extraction of chips and dust of various types. It is constructed of painted galvanized panels and it is equipped with:

- antistatic polyester cylindrical cartridge filter (270 gr/m²)
- manual pneumatic pulse filter cleaning
- continuous chip and dust discharge in a wheeled metal bin with dust level viewing window

F SERIES is designed to operate in negative pressure with high extraction efficiency through a centrifugal backward curved fan placed inside a silencing chamber, that allows provides improved suction over other filtering units on the market with minimal noise

Indoor filter unit F200



Reliable, quiet and easy to use. With its compact design, optimized for maximum efficiency with a small form factor, F SERIES is suitable for the extraction of chips and dust of various types. It is constructed painted galvanized panels and it is equipped with:

- antistatic polyester cylindrical cartridge filters (270 gr/m²)
- manual pneumatic pulse jet filter cleaning system
- continuous chip and dust discharge in a wheeled metal bin with dust level viewing window

F SERIES is designed to operate in negative pressure with high extraction efficiency through a centrifugal backward curved fan placed inside a silencing chamber, that allows provides improved suction over other filtering units on the market with minimal noise.

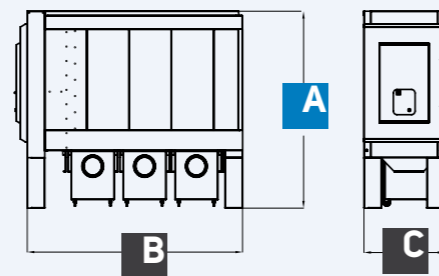
MODEL	F 200
Air-Flow Rate [CFM]	1765
Pressure [in/we]	9.8"
Quantity of Bins	2 x 34 gal.
Fan Power [hp]	5
Filtering Surface Area [Ft ²]	215
Quantity of Filtering Elements	2
Filtering Elements Diameter	Ø14.5" x H23.6"
Dimensions [in]	86" x 91" x 42"
Noise Level [Db(A)]	75
Inlet Diameter [in]	8"
Outlet Sizes [in]	8" x 39"

Compact internal dust extractor, efficient, noiseless

F250/F320/F380/F450



VERSION
ROLL-AWAY BIN



VERSION
WITH HOPPER AND ROTARY VALVE



VERSION
WITH BRIQUETTING PRESS

F SERIES

is designed to operate in negative pressure with high extraction efficiency utilizing a centrifugal backward-inclined fan placed inside a silencing chamber which provides improved suction over other filtering units on the market, with minimal noise.

Reliable, quiet and easy to use. With its compact design, optimized for maximum efficiency with a small form factor, F SERIES is suitable for the extraction of chips and dust of various types.

It is constructed of painted galvanized panels and is equipped with:

- settling chamber to separate larger chips before filtration
- antistatic polyester cylindrical cartridge filters (270 gr/m²) (F380 & F450)
- antistatic polyester needlefelt filter sleeves (500 gr/m²) (F250 & F320)
- timer-controlled pneumatic pulse jet filter cleaning system
- continuous chip and dust discharge into wheeled metal bins with dust level viewing windows

F 450 VERSION

For indoor or outdoor use this unit is designed for collecting wood and other dusts. Fitted with polyester cartridges (270 g/m²), it operates in negative pressure. The F Series features a programmable compressed air pulse-jet filter cleaning system and a dust settling chamber to ensure high filter efficiency. Collected waste is stored in 3 wheeled bins with viewing windows.

NFPA COMPLIANT*

Units may be configured with safety equipment to provide protection in accordance with NFPA guidelines. These include anti-static filtering sleeves, explosion relief panel, clean-air side suction fan, enclosed control panel with safety system interlink. Additional safety equipment available to provide a complete NFPA compliant solution.

BRIK VERSION

Designed for use with briquetting presses (24" taller legs) with special coupling system for hoppers, removable whenever necessary.

OPTIONS

- High efficiency after-filter plenum for recirculating the air into the work environment
- Exhaust piping to discharge the air outside
- NFPA compliant explosion relief vents
- NFPA compliant no-return valve on the dirty air ductwork
- Hydraulic briquette press
- Connection for pneumatic conveyor with rotary valve
- Hopper with rotary valve for use with dumpster

* NFPA compliance may require additional safety equipment and safety measures, depending on specific installation conditions. Contact COIMA USA to learn more about NFPA requirements for your application.

MODEL	F 250	F 320	F 380	F 450
Air-Flow Rate	3900 m ³ /h 2300 cfm	5750 m ³ /h 3400 cfm	8000 m ³ /h 4700 cfm	12000 m ³ /h 7100 cfm
Static Pressure	3010 Pa 12 inwg	3300 Pa 12.5 inwg	3785 Pa 15.25 inwg	2750 Pa 11 inwg
Waste Bin Quantity	2x200 L 2x53 gal	3x200 L 3x53 gal	3x200 L 3x53 gal	3x200 L 3x53 gal
Fan Motor Power	5,5 kw 7,5 hp	7,5 kw 10 hp	11 kw 15 hp	15 kw 20 hp
Filtering Media Surface Area	20 sqm 215 sqft	30 sqm 323 sqft	144 sqm 1550 sqft	162 sqm 1743 sqft
Filter Quantity	40	60	32	36
Filter Diameter mm/in	125 mm 5 in	125 mm 5 in	145 mm 6 in	145 mm 6 in
Filter Length mm/in	1300 mm 52 in	1300 mm 52 in	1200 mm 47 in	1200 mm 47 in
Base BxC mm/in	2325x1100 99 x 43 in	3500x1100 125 x 43 in	3500x1100 125 x 43 in	3500x1100 125 x 43 in
Height A mm/in	2440 mm 97 in	2440 mm 97 in	2440 mm 97 in	2440 mm 97 in
Noise Level [Db(A)]	75	75	80	80
Inlet Dimensions mm/in	250 mm 10 in	320 mm 13 in	380 mm 15 in	450mm 18 in
Outlet Dimensions mm/in	1030x200 40.5 x 7.88 in	1030x200 40.5 x 7.88 in	1030x200 40.5 x 7.88 in	1030x200 40.5 x 7.88 in

Compact internal dust extractor, efficient, noiseless

FC250/FC320/FC380/FC450

Reliable, quiet, and easy to install and to use. The F compact range has been designed to provide maximum suction within a small form factor. F SERIES is suitable for the extraction of chips and dust of various types, and is ideal for capturing medium-fine dusts.

They can be installed inside the workshop (please check local codes and regulations for proper installation) or outside your facility (some considerations may be required for certain weather conditions). These units feature a negative pressure design, providing excellent suction power higher than other filtering units on the market while producing little noise (75 – 80 dbA).

- Each unit is constructed of galvanized painted panels and comes equipped with:
- settling chamber at collector inlet to protect filters from impact with dust and chips.
 - integrated non-return valve (not certified), to prevent possible pressure return to the workshop in the event of a deflagration inside the collector.
 - high-density polyester filtering sleeves (500 gr/m²) or pleated cartridges (270 gr/m²) depending upon model.
 - timer-based pneumatic filter cleaning system for online and post-cycle cleaning.
 - internal negative pressure high-efficiency centrifugal backward curved fan with integrated silencer.
 - integrated fire deluge piping with sprinkler heads (manual activation standard, automatic as upgrade)
 - waste hopper with rotary air lock for continuous waste discharge (for use with pneumatic material transfer system, diagonal screw conveyor, gravity dump into a bin/big-bag/skip, etc.).

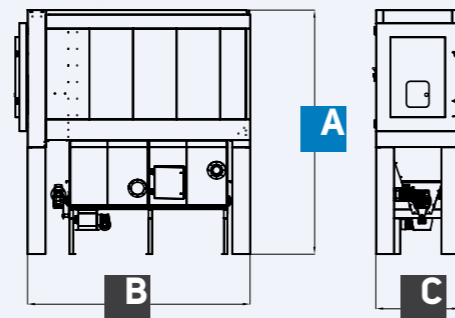
ATEX version includes:

- ATEX II 3D certified fan.
- ATEX anti-static polyester filtering sleeves (or cartridges).
- explosion vent panel with break-detection sensor.

PLEASE NOTE: in case of hydrophilic dusts we recommend using a hopper with screw conveyor (available option for this unit).



VERSION WITH HOPPER AND ROTARY VALVE



VERSION ROLL-AWAY BIN



VERSION WITH BRIQUETTING PRESS

MODEL	FC 250	FC 320	FC 380	FC 450
Air-Flow Rate [CFM]	2,650	3,650	4,710	7,100
Pressure	11.8"	11.8"	13.8"	11"
Fan Power [hp]	7.5	10	15	20
Filtering Surface Area [Ft ²]	215	323	1,550	1,744
Quantity of Filters	40	60	32	36
Filter Dimensions	Ø5" x 51" L	Ø5" x 51" L	Ø5.7" x 47" L	Ø5.7" x 47" L
Base B x C in	92"x43"		138"x43"	
Height A in	133" / 144" with Screw Conveyor			
Noise Level [Db(A)]	75	75	80	80
Inlet Diameter	10"	13"	15"	18"

Compact internal dust extractor, efficient, noiseless

FB250/FB320/FB380/FB450

Reliable, quiet, and easy to install and to use. The F compact range has been designed to provide maximum suction within a small form factor. F SERIES is suitable for the extraction of chips and dust of various types, and is ideal for capturing medium-fine dusts.

They can be installed inside the workshop (please check local codes and regulations for proper installation) or outside your facility (some considerations may be required for certain weather conditions). These units feature a negative pressure design, providing excellent suction power higher than other filtering units on the market while producing little noise (75 – 80 dbA).

- Each unit is constructed of galvanized painted panels and comes equipped with:
- settling chamber at collector inlet to protect filters from impact with dust and chips.
 - integrated non-return valve (not certified), to prevent possible pressure return to the workshop in the event of a deflagration inside the collector.
 - high-density polyester filtering sleeves (500 gr/m²) or pleated cartridges (270 gr/m²) depending upon model.
 - timer-based pneumatic filter cleaning system for online and post-cycle cleaning.
 - internal negative pressure high-efficiency centrifugal backward curved fan with integrated silencer.
 - integrated fire deluge piping with sprinkler heads (manual activation standard, automatic as upgrade)
 - continuous discharge into intermediate hopper with inspection window and door;
 - briquetting machine installed underneath the filters, equipped with level probe for automatic start/stop, emptying hopper at the end of cycle, oil pre-heating for outdoor installation, automatic loading adjustment, PLC control panel with touchscreen.

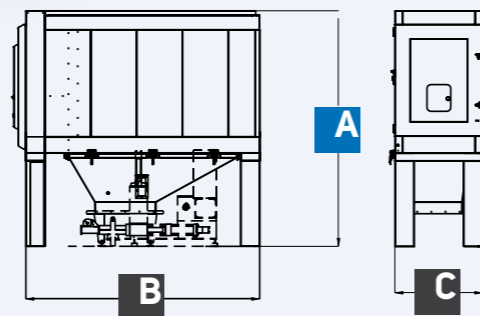
ATEX version includes:

- ATEX II 3D certified fan.
- ATEX anti-static polyester filtering sleeves (or cartridges).
- explosion vent panel with break-detection sensor.

PLEASE NOTE: dust & chip production rate, total daily volume and material type(s) must be known to properly size briquetting machine for your operation.



VERSION WITH BRIQUETTING PRESS



VERSION ROLL-AWAY BIN



VERSION WITH HOPPER AND ROTARY VALVE

MODEL	FB 250	FB 320	FB 380	FB 450
Air-Flow Rate [CFM]	2,650	3,650	4,710	7,100
Pressure	11.8"	11.8"	13.8"	11"
Fan Power [hp]	7.5	10	15	20
Filtering Surface Area [Ft ²]	215	323	1,550	1,744
Quantity of Filters	40	60	32	36
Filter Dimensions	Ø5" x 51" L	Ø5" x 51" L	Ø5.7" x 47" L	Ø5.7" x 47" L
Base B x C	92"x43"	138"x43"		
Height A	119"	119"	119"	119"
Noise Level [Db(A)]	75	75	80	80
Inlet Diameter	10"	13"	15"	18"

Filtering and storing minisilo with compressed air filter cleaning

MPD



The COIMA Mini-Silo in an integrated unit for dust collection and storage with a small footprint. Constructed of sturdy modular galvanized steel panels, it is designed to work in negative pressure systems but is suitable for positive pressure applications as well. The upper section houses a filtering battery of antistatic spun bond polyester filtering sleeves and cages. Filter cleaning is provided by an on-demand pneumatic pulse jet cleaning system, activated by differential pressure setting and as post-cycle cleaning via programmable controller.

The lower section is the waste storage chamber, equipped with a sturdy base to support the multi-leaf double spring extractor. The rotating springs move the waste toward 3 possible simultaneous hopper outlets. One outlet is designed to be connected to plastic waste bags (also available for super bag discharge) for an emergency discharge, while the 2 remaining outlets allow for a range of discharge methods.

Lexan windows in the storage section allow visual inspection of the material within the silo. An electronic bin level indicator notifies the user when dust reaches the maximum filling level, and stops the dust collector to prevent dangerous over-filling.

The Mini-Silo is also provided with a safety ladder with platform and filter chamber access door. The silo comes with safety devices to prevent and suppress fire and explosion, including explosion venting panels and fire suppression deluge system complete with sprinklers. Additional NFPA compliant safety devices are available for all COIMA USA dust collection systems.

An optional drop-out chamber can be provided at the collector inlet to protect the filters from the impact with dust and chips.

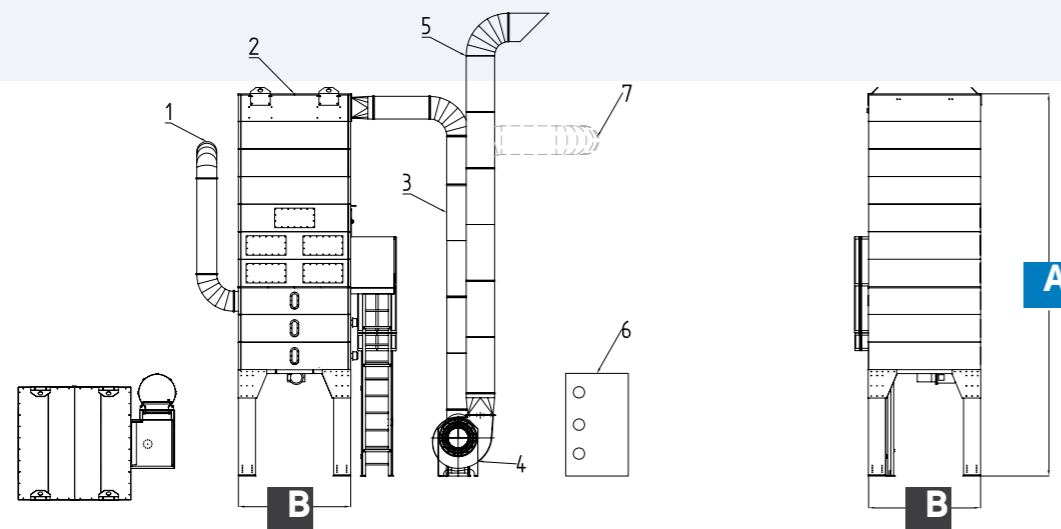
Excellent suction is provided by a premium efficiency centrifugal backward curved fan installed on the clean air side. The induction fan motor is rated for S1 duty cycle (continuous running) and features IE3 efficiency and IP55 protection.

ATEX version includes:

- ATEX II 3D certified fan.
- ATEX anti-static polyester filtering sleeves.

PLEASE NOTE: COIMA Mini-Silos in ATEX version are compliant with EN12779-2015.

An inclined screw conveyor system is available for gravity discharge into larger containers located next to Mini-Silo.



MODEL	MPD 106	MPD 109	MPD 112	MPD 206	MPD 209	MPD 212
Air-Flow Rate [Cfm]	16,200	16,200	16,200	20,600	20,600	20,600
Pressure	15.7"	15.7"	15.7"	16.1"	16.1"	16.1"
Fan Power [Hp]	60	60	60	75	75	75
Storage Capacity [Yd ³]	7.8	11.8	15.7	7.8	11.8	15.7
Filtering Surface Area [Ft ²]	1,916	1,916	1,916	2,486	2,486	2,486
Nr. Filtering Sleeves	168	168	168	168	168	168
Filtering Sleeves Diameter	Ø5" x 106" L	Ø5" x 106" L	Ø5" x 106" L	Ø5" x 138" L	Ø5" x 138" L	Ø5" x 138" L
Length B x Width B x Height A	8'-4" x 8'-4" x 25'-4"	8'-4" x 8'-4" x 27'-0"	8'-4" x 8'-4" x 28'-8"	8'-4" x 8'-4" x 28'-7"	8'-4" x 8'-4" x 30'-2"	8'-4" x 8'-4" x 31'-10"
Air Outlet	28 x 16	28 x 16	28 x 16	35 x 16	35 x 16	35 x 16

Filtering and storing minisilo with mechanical shaking cleaning

MVD



The COIMA Mini-Silo is an integrated unit for dust collection and storage with a small footprint. Constructed of sturdy modular galvanized steel panels, it is designed to work in negative pressure systems but is suitable for positive pressure applications as well.

The upper section houses a filtering battery of antistatic spun bond polyester filtering sleeves fixed to a supporting frame by snap rings. Filters are cleaned using an ATEX-certified motorized shaker when the suction fan is not operating. The lower section is the waste storage chamber, equipped with a sturdy base to support the multi-leaf double spring extractor. The rotating springs move the waste toward 3 possible simultaneous hopper outlets. One outlet is designed to be connected to plastic waste bags (also available for super bag discharge) for an emergency discharge, while the 2 remaining outlets allow for a range of discharge methods.

Lexan windows in the storage section allow visual inspection of the material within the silo. An electronic bin level indicator notifies the user when dust reaches the maximum filling level, and stops the dust collector to prevent dangerous over-filling. The Mini-Silo is also provided with a safety ladder with platform and filter chamber access door. The silo comes with safety devices to prevent and suppress fire and explosion, including explosion venting panels and fire suppression deluge system complete with sprinklers. Additional NFPA compliant safety devices are available for all COIMA USA dust collection systems.

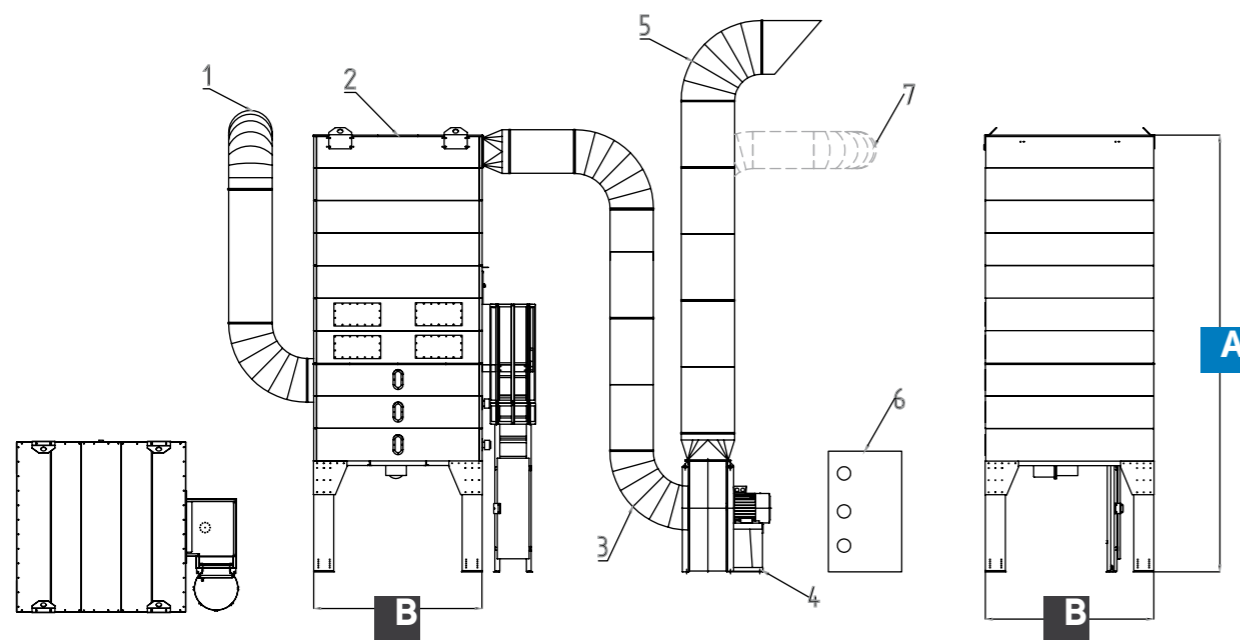
An optional drop-out chamber can be provided at the collector inlet to protect the filters from the impact with dust and chips.

Excellent suction is provided by a premium efficiency centrifugal backward curved fan installed on the clean air side. The induction fan motor is rated for S1 duty cycle (continuous running) and features IE3 efficiency and IP55 protection.

ATEX version includes:

- ATEX II 3D certified fan.
- ATEX anti-static polyester filtering sleeves.

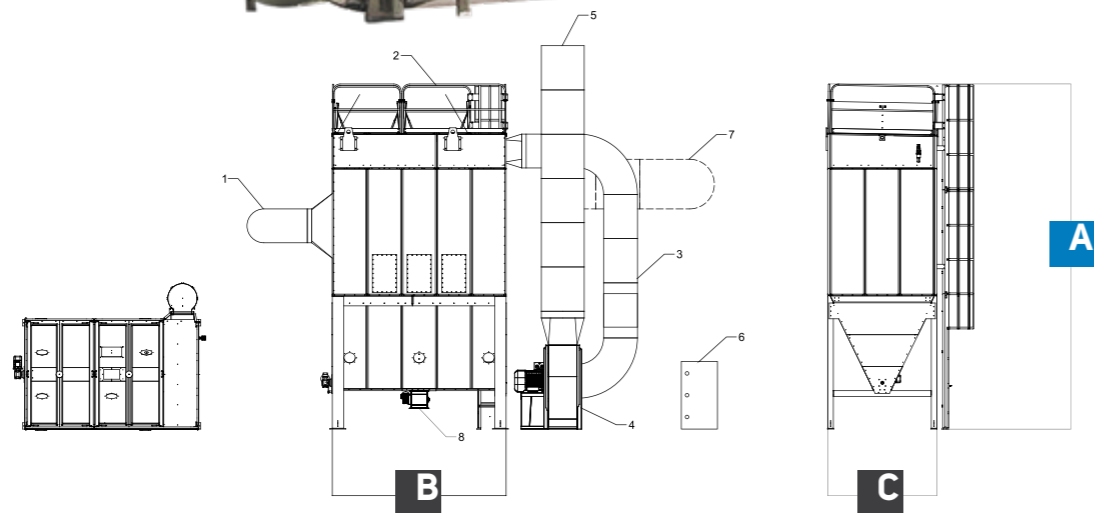
PLEASE NOTE: COIMA Mini-Silos in ATEX version are compliant with EN12779-2015.



MODEL	MVD 106	MVD 109	MVD 112	MVD 206	MVD 209	MVD 212	MVD 306	MVD 309	MVD 312
Air-Flow Rate [CFM]	5,900	5,900	5,900	8,850	8,850	8,850	11,800	11,800	11,800
Pressure	11"	11"	11"	13.8"	13.8"	13.8"	13.4"	13.4"	13.4"
Fan Power [Hp]	20	20	20	30	30	30	40	40	40
Storage Capacity [Yd ³]	7.8	11.8	15.7	7.8	11.8	15.7	7.8	11.8	15.7
Filtering Surface Area [Ft ²]	764	764	764	1,184	1,184	1,184	1,679	1,679	1,679
Nr. Filtering Sleeves	90	90	90	90	90	90	90	90	90
Filtering Sleeves Diameter	Ø8" x 49" L	Ø8" x 49" L	Ø8" x 49" L	Ø8" x 76" L	Ø8" x 76" L	Ø8" x 76" L	Ø8" x 108" L	Ø8" x 108" L	Ø8" x 108" L
Length B x Width B x Height A	8'-4"x8'-4" x 16'-1"	8'-4"x8'-4" x 17'-8"	8'-4"x8'-4" x 19'-3"	8'-4"x8'-4" x 17'-8"	8'-4"x8'-4" x 19'-3"	8'-4"x8'-4" x 20'-10"	8'-4"x8'-4" x 20'-10"	8'-4"x8'-4" x 22'-6"	8'-4"x8'-4" x 24'-1"
Air Outlet	19 x 24	19 x 24	19 x 24	19 x 24	19 x 24	19 x 24	19 x 24	19 x 24	19 x 24

Dust extractor with compressed air filter cleaning

UPD



This large form factor baghouse collector is constructed of thick galvanized steel frame and galvanized steel panels. It is designed to operate in negative pressure (with the fan on the clean air side).

It is suitable for the extraction of various wood dusts and other fine particles, and is equipped with:

- integral drop-out chamber at the inlet to protect filters from impact with dust chips and particles (not available on UPD120).
- high-density (500 g/m²) ATEX anti-static polyester filtering sleeves.
- on-demand pneumatic pulse jet filter cleaning system, activated by differential pressure setting on filter cleaning control manual, after collector shut down, and during offline hopper unloading cycle.
- integral dust hopper with motorized screw extractor (except UPD120 model) and rotary air-lock valve, inspection door, and bin level indicator.
- safety ladder and rails for top-side filter access and maintenance, with airtight access doors fitted with gas springs.
- explosion relief vents and internal dry stand pipe fire suppression with multiple sprinkler heads.
- high efficiency fan(s) installed on the clean air side: provides improved suction while reducing noise levels compared to competitors.

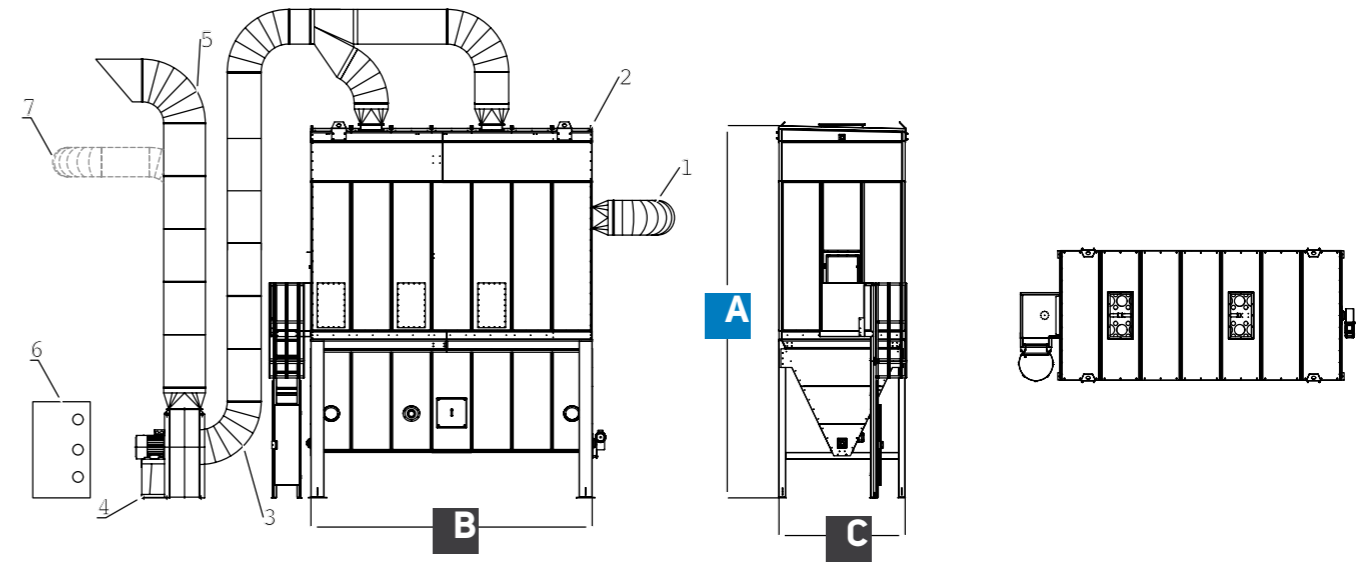
Models up to 176,000 cfm (300.000 m³/h) of filtering capacity (on demand).
Additional NFPA compliant safety devices are available for all COIMA USA dust collection systems.

MODEL	UPD 180	UPD 300	UPD 480	UPD 660	UPD 840
Air-Flow Rate [CFM]	17,650	29,425	41,200	58,850	70,625
Filtering Surface Area [Ft ²]	1,938	3,229	5,167	7,184	9,042
Nr. Filtering Sleeves	156	260	416	572	728
Storage Capacity	ND	ND	ND	ND	ND
Length B x Width C x Height A	121" x 95" x 315"	182" x 95" x 315"	273" x 95" x 315"	364" x 95" x 315"	485" x 95" x 315"

* Technical data refers to example versions. Specific capacities up to 176,500 CFM are available on request.

Filtering unit with mechanical shaking cleaning

UVD



This large form factor baghouse collector is constructed of thick galvanized steel frame and galvanized steel panels. It utilizes a mechanical filter cleaning system, suitable for the extraction of various wood dusts and other fine particles, and is equipped with:

- mechanical shaking cleaning system with eccentric motor.
- integral dust hopper with motorized screw extractor (except UPD120 TOP model) and rotary air-lock valve, inspection door, and bin level indicator.
- safety ladder and rails for top-side filter access and maintenance, with airtight access doors fitted with gas springs.
- explosion relief vents and internal dry stand pipe fire suppression with multiple sprinkler heads.

Suitable for operation in both positive and negative pressure systems.
 Additional NFPA compliant safety devices are available for all COIMA USA dust collection systems.
 Models up to 41,200 cfm (70,000 m³/h) of air capacity (larger units available by request).

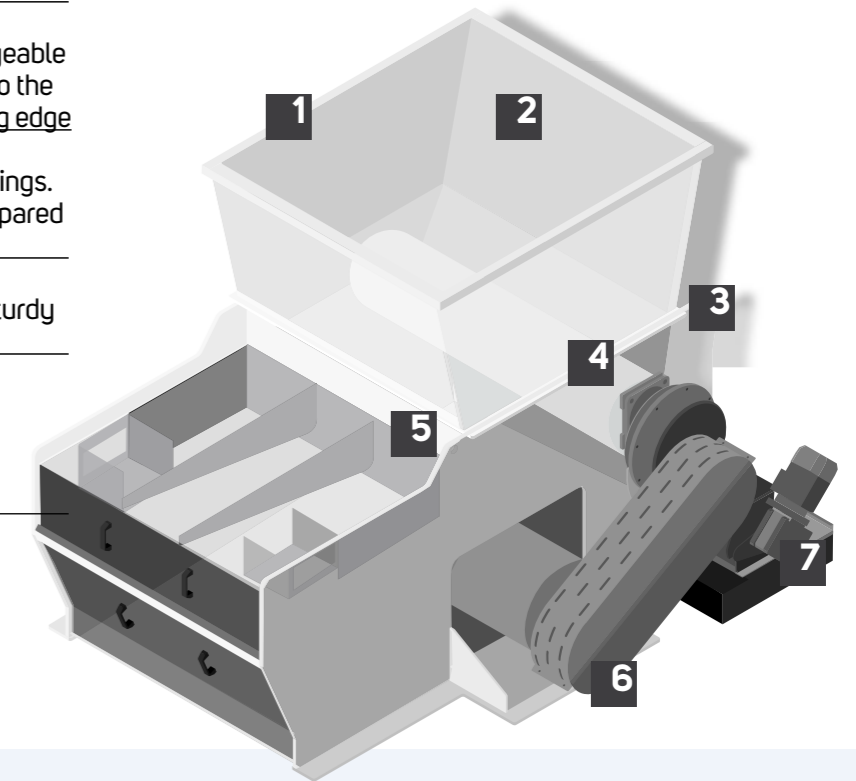
MODEL	UVD 252	UVD 378	UVD 546	UVD 798
Air-Flow Rate [CFM]	17,650	29,425	41,200	58,850
Filtering Surface Area [Ft ²]	2,713	4,069	5,877	8,590
Nr. Filtering Sleeves	144	216	312	456
Storage Capacity	ND	ND	ND	ND
Length B x Width C x Height A	182" x 95" x 287"	273" x 95" x 287"	394" x 95" x 287"	576" x 95" x 287"

Shredder

MNA



- 1_ Heavy Duty Steel Plate
- 2_ Large load hopper with gas spring door and latching safety micro-switch
- 3_ Perforated sheet metal grid with reinforcement frames and fixing system
- 4_ Special turned steel rotor with interchangeable knives, each with a bracket screwed onto the shaft and reversible hardened steel cutting edge
- 5_ Sliding pusher on steel rails and ball bearings. Greatly reduced maintenance costs compared to standard Teflon sliding rail systems
- 6_ Drive assembly with belts, pulleys and sturdy gear reducer
- 7_ Standard linkup to a centralized suction system or using a lateral screw conveyor Hydraulic power aggregate complete with oil re-heating system

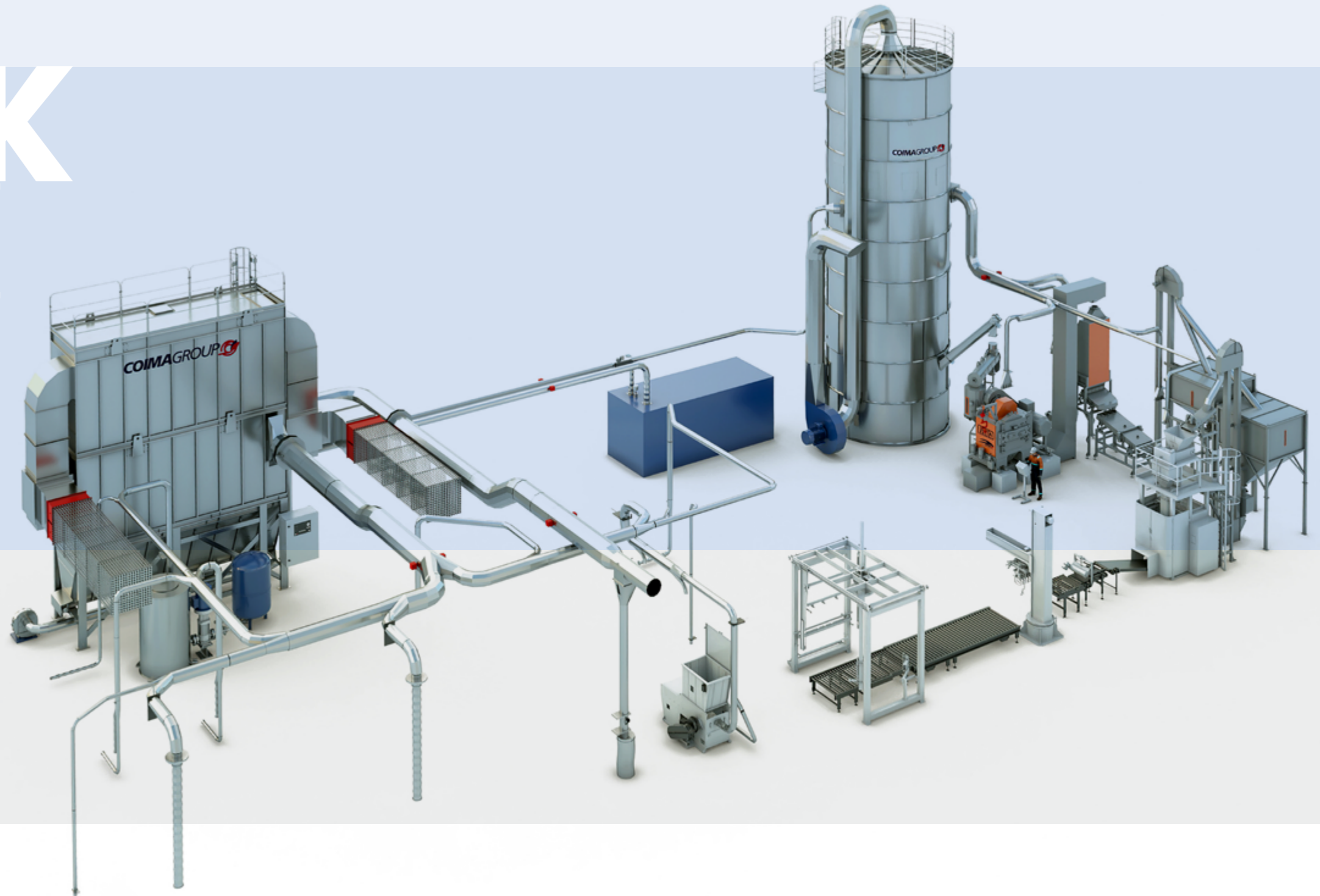


Built in compliance with the highest construction and safety standards, the COIMA MNA grinders are the most effective solution for grinding and reducing the volume and particle size of wooden waste of any type or form, and other materials such as plastic, paper, cardboard (mixed with wood), bark, pallets and, generally speaking, non-ferrous materials whose physical characteristics are suited for this type of machine and process.

They are highly respected in the sawmill industry, in pellet production plants and in biomass treatment facilities. Their sturdy structure and components, the quality of the materials used as well as their technical and safety features, ensure long-lasting durability. Thanks to PLC electronic control, these machines can run without the need for an operator. Once loaded, the MNA grinder automatically grinds the waste until the hopper is completely empty, after which it will switch to stand-by mode.

Technical Specifications	MNA 1	MNA 2	MNA 3	MNA 4
Length	86.6 in	90.5 in	102 in	102 in
Width	43.3 in	55.2 in	85.4 in	85.4 in
Height	70.9 in	80.3 in	80.7 in	80.7 in
Hopper Opening (D x E)	31.5 x 19.7 in	51.2 x 31.5 in	51.2 x 51.2 in	51.2 x 51.2 in
Weight	2,645 lbs	4,035 lbs	6,615 lbs	9,040 lbs
Installed Power	15 hp	20-25 hp	50-60 hp	100 - 120 hp
Wood Production* (Ø20 Grid)	285 - 770 lbs/hr	440 - 2,200 lbs/hr	1,100 - 3,080 lbs/hr	1,760 - 3,750 lbs/hr

THINK PURE



The success of CoimaUsa is based on a new way to structure offers, we provide customized solutions that are the result of studying our customers' production requirements, plant automation engineering systems and Coima's technology. Call 800.417.9206 info@coimausa.com





CoimaUsa

Extraction solutions

7377 Doerr Lane, Ste. 200
Schertz, TX 78154

Toll free 800.417.9206

Office 206.454.7091

info@coimausa.com

www.coimausa.com



Documentation made by the Coima technical offices. The company reserves to make changes without notice. _ © Coima 2023.

Italy, France, Usa



AZIENDA CERTIFICATA RINA ISO 9001:2015
CERTIFICATO N. 35157/17/S
REGISTRATION NUMBER IT-110529